

# Robert J. Havey, MD

## Institute for Global Health

Northwestern University Feinberg School of Medicine







# Robert J. Havey, MD Institute for Global Health

## Northwestern University Feinberg School of Medicine

### Introduction

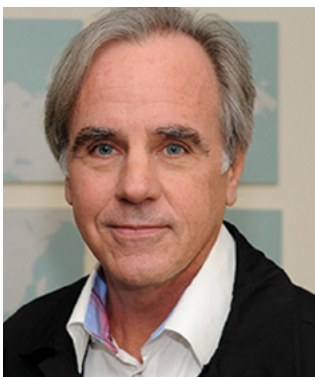
Practicing medicine in the 21st century requires a broad knowledge of health issues faced around the world. Globalization has made it so that no disease can be confined by national border or ocean. Physicians are called upon to address global health concerns, even within their community practice or hospital. The devastating COVID-19 pandemic is a stark reminder that no community is immune from public health threats.

Northwestern University Feinberg School of Medicine established the Institute for Global Health in 2019, creating an epicenter for world-class global health research, training, and education. The institute has grown in its mission and prominence, and was named the **Robert J. Havey, MD Institute for Global Health** in 2021 through a landmark gift from Northwestern University trustees and alumni Patrick G. and Shirley W. Ryan. The institute is led by Executive Director Robert L. Murphy, MD, '81 '84 GME, the John Philip Phair Professor of Infectious Diseases in the Department of Medicine and professor of Biomedical Engineering at Northwestern's McCormick School of Engineering, and Deputy Director Robert J. Havey, '80 MD, '81 '83 GME, clinical professor of Medicine in the Division of General Medicine and Geriatrics and director and founder of the Global Health Initiative (GHI) Fund.

The Havey Institute for Global Health seeks to transform global health education, ensure equitable access to quality healthcare for all individuals, and conduct groundbreaking research to address the world's most pressing global health challenges. Our mission at the Havey Institute for Global Health is to expand knowledge, capacity, and equity in global health through transdisciplinary research and education partnerships. Our work focuses on student, resident, fellow, and faculty education in global health; coordination and support of faculty to carry out global health research; and partnership-building and clinical outreach to communities around the world.

We lead innovative educational programs in Chicago and abroad to strengthen the knowledge base on global health issues for our trainees. We provide Feinberg students, residents, and fellows with access to valuable training experiences through our network of global partnerships. The institute is committed to promoting health equity issues through translational research and interdisciplinary training programs in both the U.S. and globally. Academic institutions play an important role in the global health agenda of mitigating global risk of disease and developing sustainable health systems around the world. Institute members work collaboratively across many of Northwestern's schools to offer education, research, and service where it is needed most.

We focus on conducting research and training programs in low-income settings around the world with the support of grants from the U.S. National Institutes of Health, government contracts, and foundation activities. Current areas of research encompass the fields of infectious diseases and HIV, cardiology, gynecology, bioengineering, surgery, primary care, pathogen genomics, community medicine, oncology, neuroscience, microbiology, and health economics and policy.



---

“There are big, pressing needs worldwide; our objective is to help the citizens of these areas through technology and training. The broader structure of our institute fits better with the multidisciplinary nature of what we’re doing. Academic institutions play an important role in the global health agenda of mitigating global risk of disease and developing sustainable health systems around the world.”

Robert Murphy, MD  
Executive Director, Robert J. Havey, MD Institute for Global Health  
John Philip Phair Professor of Infectious Diseases  
Professor of Medicine and Biomedical Engineering

## Centers within the Havey Institute for Global Health

Through our specialized centers, our institute pursues our research, training, and outreach goals. Each center brings together experts from across a variety of disciplines to address the major challenges of our broad field.



### Buehler Center for Health Policy & Economics

The Buehler Center amplifies the institute's mission to foster healthy populations, promote health security, and lead in public health science and practice globally and through policy.



### Center for Global Cardiovascular Health

Through the Center for Global Cardiovascular Health, we seek to improve global cardiovascular health and healthcare across the spectrum of disease prevention.



### Center for Global Communicable and Emerging Infectious Diseases

The Center for Global Communicable and Emerging Infectious Diseases investigates the pressing challenges related to communicable diseases such as malaria, tuberculosis, and HIV, as well as global emerging infectious diseases.



### Center for Global Health Education

Through training at every level, the Center for Global Health Education aims to create knowledge, capacity, and equity in global health through partnerships in transdisciplinary education at Northwestern and across the globe.



### Center for Global Oncology

Over 80 percent of cancer deaths occur in low- and middle-income countries. Through the Center for Global Oncology, we look to bring cancer education, research, and treatment to underserved areas. This is a joint center between the Havey Institute for Global Health and the Robert H. Lurie Comprehensive Cancer Center of Northwestern University.



---

“The disparity in access to healthcare around the world is unnecessary and unsustainable. The Robert J. Havey, MD Institute for Global Health will utilize innovative research, evidence-based clinical care, and comprehensive education to turn the tide on the global health crises of today, helping secure a better world for all of us tomorrow.”

Robert Havey, MD

Deputy Director, Robert J. Havey, MD Institute for Global Health  
Clinical Professor of Medicine, Division of General Medicine and Geriatrics  
Director and Founder of the Global Health Initiative Fund



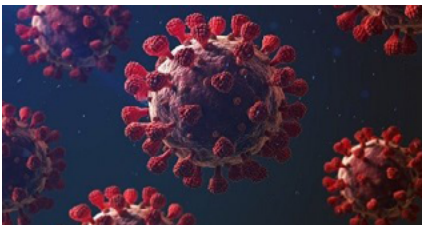
#### Center for Global Surgery

Through the Center for Global Surgery, we aim to improve access to essential surgical care by addressing the barriers to care through multidisciplinary and bidirectional partnerships; through innovation, research, education, policy, and advocacy; by training the next generation of global health leaders; and by building sustainable capacity in regions with health inequities.



#### Center for Innovation in Global Health Technologies

The Center for Innovation in Global Health Technologies seeks not merely to develop, but also to bring to market comprehensive, context-appropriate healthcare solutions that integrate seamlessly with the lives of patients and medical practitioners in the developing world.



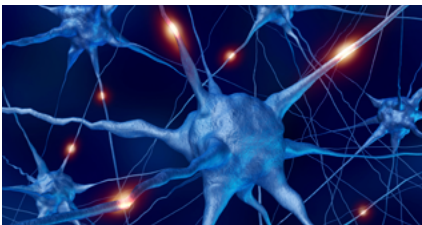
#### Center for Pathogen Genomics and Microbial Evolution

The Center for Pathogen Genomics and Microbial Evolution looks to provide specialized expertise in pathogen-specific sequence analysis and bioinformatics for emerging and ongoing infectious disease threats.



#### Ryan Family Center for Global Primary Care

Through the Ryan Family Center for Global Primary Care, we aim to strengthen the global and local effort to improve global primary healthcare quality, access, and impact through partnerships and innovations in research, education, and service.



#### Program for Global Neurology

The Program for Global Neurology seeks to improve global neurologic health and provide neurological care, research, and education to underserved populations.

### Supporting the Havey Institute for Global Health

Thanks to our generous and dedicated supporters, the Havey Institute for Global Health Fund has established educational outreach programs, supported clinics where our medical trainees and faculty work, provided seed funding for research, and worked closely with faculty across the medical campus and the world to support efforts in global health. We invite interested individuals and groups to support the Havey Institute for Global Health with gifts to grow and sustain our work, funding breakthrough research, training, global outreach opportunities, and other high-impact priorities of the institute.

For more information about giving to the Havey Institute for Global Health, contact:

Tiffany Scaparotti  
Assistant Dean for Development  
Email: [tiffany.scaparotti@northwestern.edu](mailto:tiffany.scaparotti@northwestern.edu)  
Phone: 312-503-3088

Jenn Burke  
Senior Associate Director  
Email: [jennifer.burke@northwestern.edu](mailto:jennifer.burke@northwestern.edu)  
Phone: 312-503-4635

To learn more about the Institute for Global Health, visit [globalhealth.northwestern.edu](http://globalhealth.northwestern.edu)