



Alliance for Research with Chicagoland Communities/
Northwestern University Clinical & Translational Sciences Institute

2025/Round 18 Community Research Seed Grants Research Pilot Request for Applications

Application Deadline: April 22, 2025

The Alliance for Research with Chicagoland Communities ([ARCC](#))/Northwestern University Clinical & Translational Sciences Institute ([NUCATS](#)), in partnership with Northwestern Memorial Hospital ([NMH](#))*, will fund Research Pilot Seed Grants that support partnerships that are driven by Chicagoland communities most impacted by health inequities in research collaboration with Northwestern research teams. Community-driven research partnerships can increase the trustworthiness, relevance, quality, and impact of health research. These seed grants can lay the groundwork for research collaboration that requires or encourages community and patient leadership from the [National Institutes of Health](#), Patient-Centered [Outcomes Research Institute](#), [Centers for Disease Control](#), and other federal and private foundation funders. Research Pilot awards are up to \$30,000 and up to 24 months. The [Seed Grant program](#) has a strong focus on supporting communities and partnerships to address racism and other types of oppression in their partnerships and research practices.

Note: During this Spring cycle, ARCC Community Research Capacity-Building and Partnership Development applications are also being accepted. Those Requests for Applications are available [here](#).

Quick Links

- [Community Research Focus](#)
- [Research Pilot Grants](#)
- [Eligibility](#)
- [Priorities](#)
- [Application Instructions](#)
- [Required Info Session & Resources](#)
- [Timeline](#)
- [ARCC Background](#)

[Community Research Focus](#)

Community research is an approach to research that honors and centers the knowledge of communities in their local, cultural, practice and lived experiences for improving health equity. While applications may focus along the full continuum of community research partnership and engagement, including community-engaged research (CEnR), community-based participatory research (CBPR), patient-centered outcomes research (PCOR), and/or other research collaborations, ARCC encourages *community-led and community-driven research* that moves beyond more transactional community engagement in academic-led research. We encourage collaborations that consider power structures and foster community leadership and prioritization and embrace a more transformational approach to the processes and practices that govern research. See ARCC [intro video \(20 minutes\)](#) to *community-engaged research* for more context. *Health equity* means that everyone has a fair and just opportunity to be as healthy as possible. This requires the intentional focusing of resources and power to Black, Indigenous People of

**Note:* Funding from NMH is provided by the Bertha Helms Trust Foundation.

Color (BIPOC), and other marginalized communities most impacted by structural oppression and racism and the root causes of health inequities. This funding opportunity prioritizes community-academic partnerships and research aimed at addressing root causes of health inequities that inhibit the ability of communities to thrive.

Research Pilot Seed Grants are intended to advance the work of existing community-academic partnerships that have prior collaborative experience. Activities for these awards may include conducting preliminary research activities and developing and preparing collaborative research proposals for external research funding. *Research Pilot applications must include some form of data collection or analysis (examples below). In addition, these applications should also include a focus on strengthening and extending partnership sustainability and capacity for research and community impact.*

Possible collaborative activities include

- Identifying needs and/or assets and/or collecting pilot data;
- Reviewing and interpreting existing data to inform further study, community impact, and/or demonstrate potential impact/capacity for application for future funding;
- Collaboratively developing/pilot testing interventions to inform further study, community impact, and/or application for external funding;
- Collaboratively designing components of a community research project (e.g. research questions, methodologies, recruitment & retention approaches, data collection/analysis instruments and protocols, interventions, dissemination and implementation plans) and preparing proposals for external research funding; (this may include asset-based and solution-focused research approaches to address root causes of health inequities);
- Community-academic partnership-building activities focused on deepening relationships and capacity development for longer-term research and community impact collaboration. This
- marginalized communities in research participation and leadership.

Maximum grant request: \$30,000

Grant length: 24 months

Note: If you do not have a current relationship with a Northwestern researcher or community partner, an ARCC [Partnership Development Seed Grant](#) is a better fit.

Eligibility

- Applications must be submitted jointly by a community-academic partnership (including at least one community or faith-based organization or public agency with an identified Community Lead as representative AND at least 1 Northwestern faculty member as academic lead). Additional community and academic collaborators may also be involved.
- Before submission, the Community Lead and/or Academic Lead applicant is **required** to participate in (or view recording of) a ARCC Research Pilot information [session](#).

Priorities

- Community leads who are BIPOC or other marginalized communities most impacted by health inequities; and/or
- Partnerships that focus on racial & health equity & addressing root causes
- Partnerships who have previously received and completed an ARCC Partnership Development award.

Proposed aims and activities should reflect Center for Community Health [Principles of Engagement](#), and may draw from the following resources for understanding [health equity](#), [root causes](#), and [racial equity in research engagement](#) including the [ARCC Anti-Racist Community-Academic Research Reflective Practice Tool](#). Applicants may also find it helpful to look at themes and guiding principles established through Chicago Department of Public Health's [Healthy Chicago](#) (*further information on research alignment*) and priorities identified by Northwestern Memorial Hospital's [2022 Community Health Needs Assessment](#).

Review: Applications will be peer-reviewed by both community and academic representatives with experience in and respect for community-academic collaboration, lived experience expertise, health equity and research. Review criteria include: quality and feasibility of partnership collaboration; quality and feasibility of proposed activities; potential for future positive community impact, research collaboration, funding; and alignment with priorities. *The review form and scoring rubric are available [here](#).*

Grantee Requirements: Welcome/Orientation & mid-project meetings with other grant recipients. Final report. Annual tracking survey of seed grant outcomes.

[Required Info Session & Resources](#)

[Required Info Session](#)

Before submission, the Community Lead and/or Academic Lead applicant is **required** to participate in (or view recording of) one of the ARCC Seed Grant information sessions below. These will provide general information about the seed grants and have time for full group question and answer sessions. They may also include panels or breakouts with previous grantees.

- **Virtual ARCC Grant Information Session: January 29, 2025, [Recording & Slides](#).**
- In-Person ARCC Community Research Learning Exchange: **March 20, 2025** (12-4 pm, McKinley Park Community). Details & registration: <https://bit.ly/Mar20arcc>

[Resources](#)

- **ARCC Seed Grant Technical Assistance Office Hours:** ARCC is offering short 15-minute Zoom sessions with ARCC Director Jen Brown for applicants to ask questions or get input as they finalize their applications for submission. *Registration link will be posted soon.*
 Wednesday, April 9, Noon-3 pm or Tuesday, April 15, 2-5 pm
- **ARCC Seed Grant Technical Assistance Office Hours:** ARCC is offering short 20-minute zoom sessions with ARCC Director Jen Brown for applicants to ask questions or get input as they prepare their applications for submission. **Reserve a slot [here](#) for in one of the sessions below:**

Friday, February 28, 12:30-2:30 pm
 Monday, March 10, 2-4 pm

Wednesday, April 9, 12-2 pm
 Tuesday, April 15, 2-5 pm

- Descriptions of past grantees and related items on ARCC website: www.ARCCOnline.net including [examples of successful past seed grant applications](#).
- Additional resources on ARCC's online resource directory: www.ARCCresources.net.

Questions: ARCC@northwestern.edu.

Application Instructions

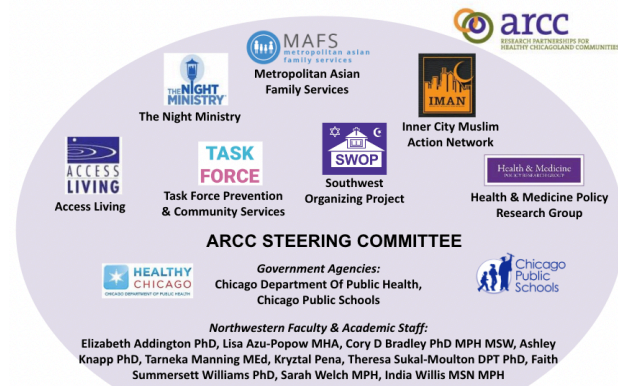
Applicants will download and complete the Application Form and Budget Excel form located [here](#). There is also an option of including three pages of Graphic/Table/Additional Information. All of these should be **combined into a single PDF file** and emailed to ARCC@northwestern.edu by the April 22, 2025 (by 11:59 pm) deadline.

Timeline

Virtual Grant Info Session- Register here	January 29, 2025, 10-11:30 AM
In-Person Grant Info Session & ARCC Learning Exchange	March 20, 2025 12-4 pm, McKinley Park Community). Registration: https://bit.ly/Mar20arcc
Technical Assistance Office Hours: 20 minute zoom sessions to address applicant questions. Reserve a slot here for in one of the sessions	Feb 28 Apr 9 Mar 10 Apr 15
Application deadline	April 22, 2025
Funding decisions communicated	June 2025
Funding Released	July 2025

ARCC Background

Established in 2008, the [Alliance for Research with Chicagoland Communities](#)' (ARCC) mission is to catalyze and support research partnerships driven by and rooted in Chicagoland communities' unique assets and experiences to achieve health justice. We support authentic community-academic research partnerships between Chicagoland communities and Northwestern University by providing partnership facilitation, capacity-building resources and technical assistance, seed grants, and advocacy for supportive structural and institutional systems and policies in the research enterprise that center community leadership. ARCC is guided by our



[Community-Academic Steering Committee](#) of community- and faith-based organizations, public agencies, and Northwestern faculty and staff. ARCC is a program of the [Center for Community Health](#) serving Northwestern's Institute for Public Health and Medicine ([IPHAM](#)) and the Northwestern University Clinical and Translational Science ([NUCATS](#)) Institute.

Over our full 17 years of seed grant funding, ARCC has distributed almost \$2 million to almost 150 community organizations and community-academic partnerships. The funded partnerships have led to increased community and academic capacity for collaboration and research, new health improvements and policy changes, over \$42 million in subsequent grant funding, and 47 peer-reviewed publications.

For more information, www.ARCCOnline.net or ARCC@northwestern.edu