



## Things to Keep in Mind

### 1. Transportation

- Walk, bike, 'L', bus, car?

### 2. Necessities

- Groceries, fitness, shopping, entertainment, etc.

### 3. Personality of neighborhood and property

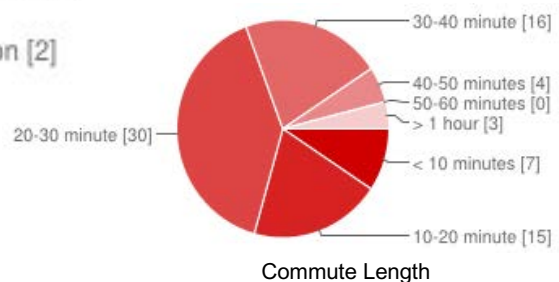
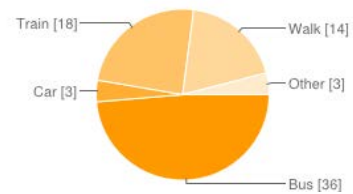
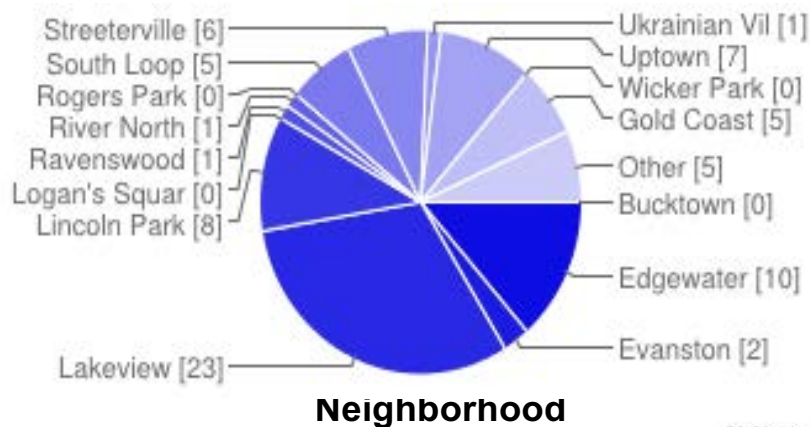
### 4. Living arrangements

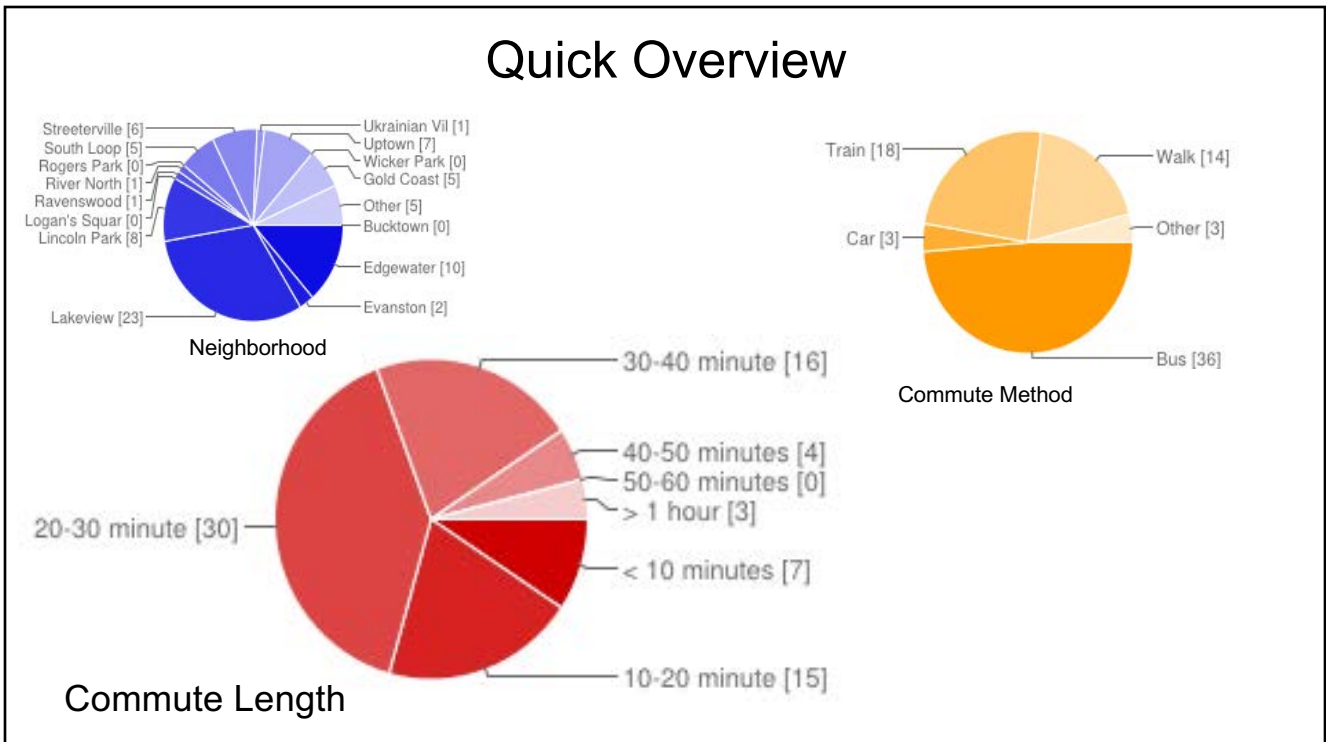
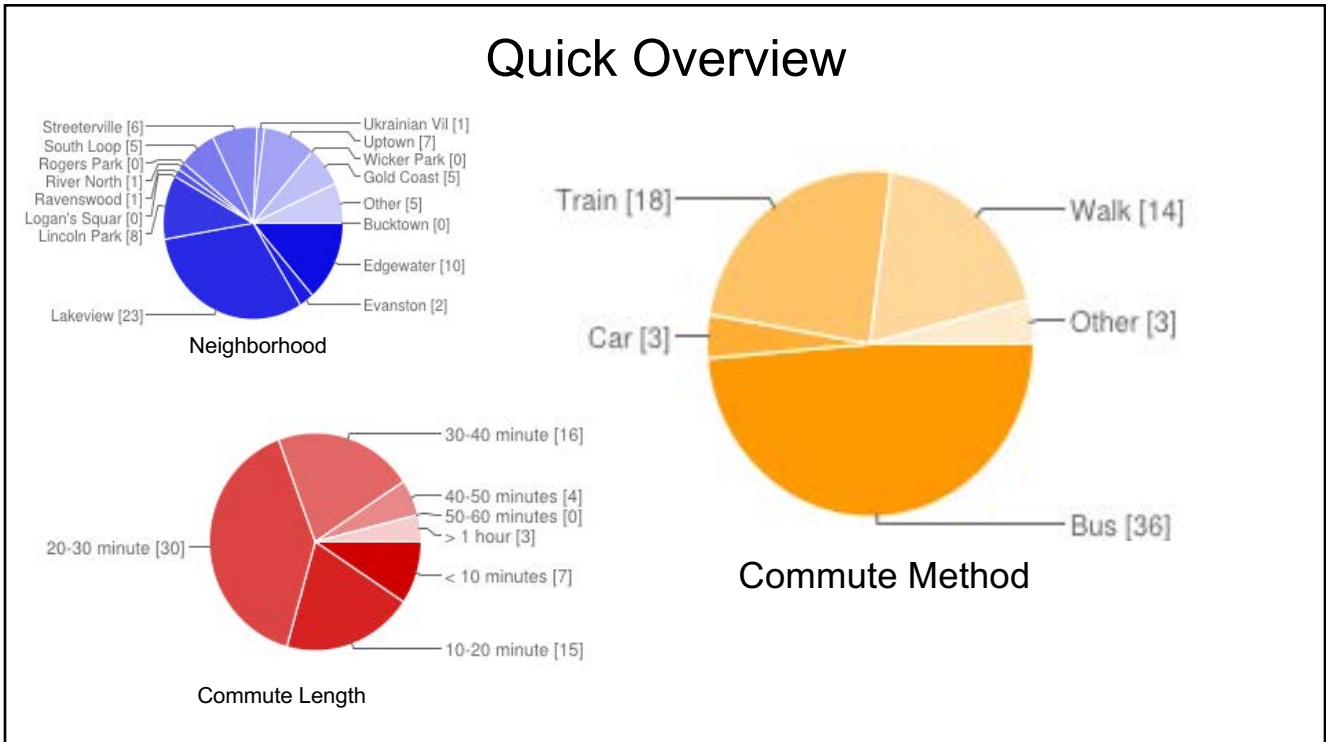
- Pets, roommates

### 5. Buying vs. renting

### 6. Utilities included

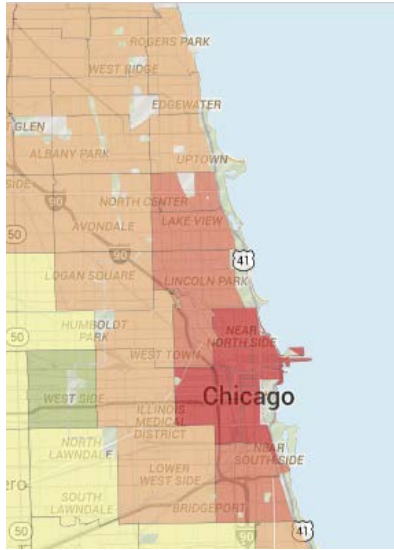
## Quick Overview



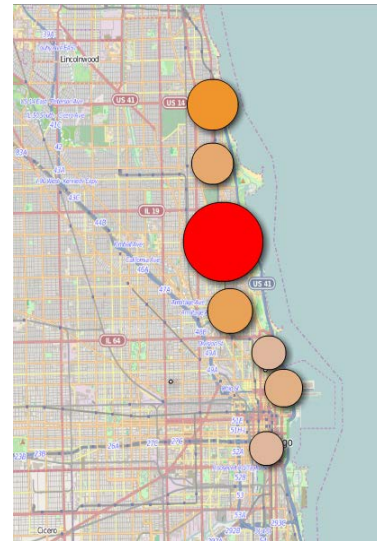


### Where do students live?

DGP Student Heat map



Rental Prices Heat map



### River North Streeterville Loop

Commute time, walking : ~5-15 min



# Streeterville / River North Area

- Walking distance
- Frequent naps
- Michigan Ave & Rush Street
- Water Tower - shopping
- Near Lake Front and beach running/bike path
- Near LA fitness

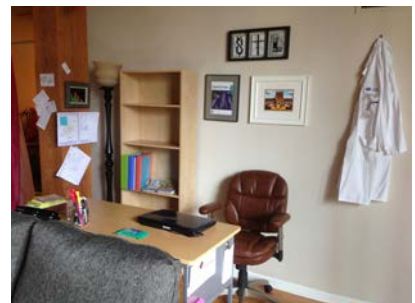
Average rent:

- Studio: \$1100+
- 1 bedroom: \$1600+
- 2 bedroom: \$2450+



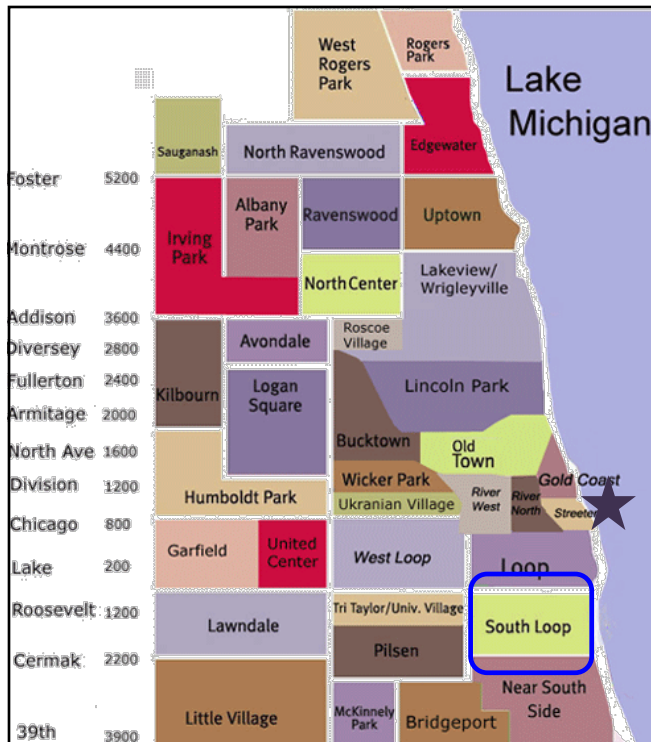
# Caitlin's Apartment

- One bedroom, one bathroom
- 5 minute walk from lab
- Rent: \$1850
- Doorman
- Rooftop, gym, laundry facilities



## Carrie's Studio Apartment

- Rent \$1295/month without electricity
- No additional Pet fees
- Five minute walk to school



## South Loop

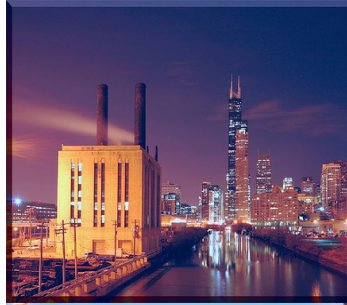
Commute time, train/bus: 20-30 min





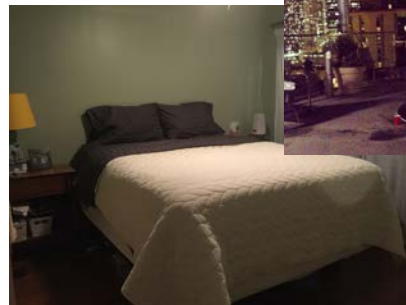
## South Loop

- Near Millennium & Grant Park
- Close to Chinatown
- Easy access to almost all L trains
- Near Museum Campus



## Hunter's Apartment

- Rent: \$1600/month
- cable and water included
- Electricity: \$70/month
- 5 minute walk to the red line
- 20-30 min commute to campus



## Lincoln Park

Commute time, bus/train : 20-40 min

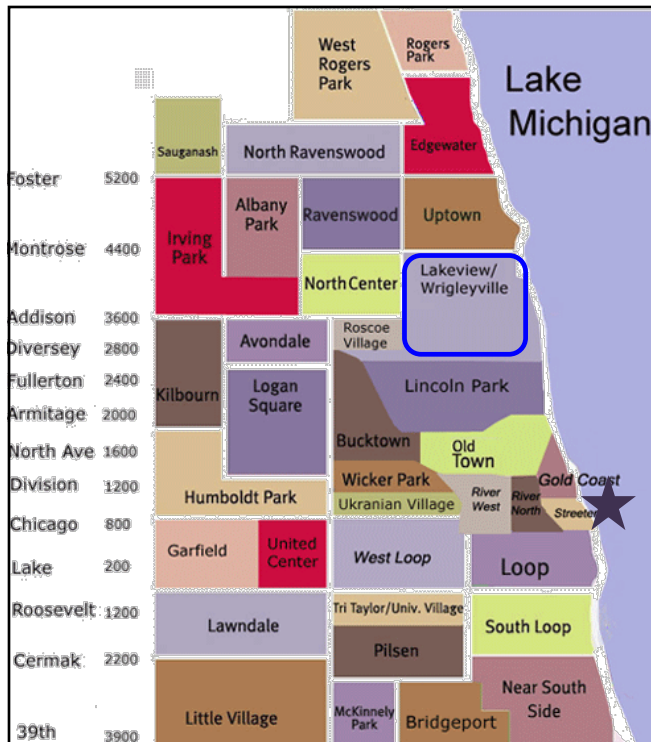
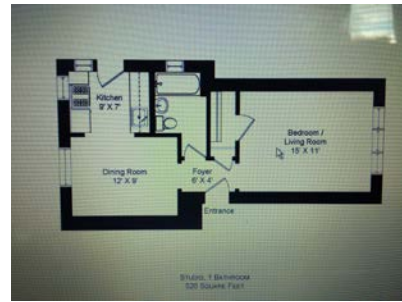
# Lincoln Park

- College students, young professionals, families
- Features:
  - DePaul University & associated nightlife
  - Children’s Memorial
  - Lincoln Park Zoo
  - Large retail areas
- Average rent:
  - Studio: \$1150+
  - 1 bedroom: \$1300+
  - 2 bedroom: \$2000+

# The Second City

# Gael's Apartment

- \$1115/month
- Heat included
- Easy access to Lakeshore Drive express buses and the Fullerton red line



# Lakeview

Commute time : 20-40 min



# Lakeview



•Young professionals, small families, longtime residents

•Features:

- Wrigley Field and Boystown
- Lots of restaurants & bars
- Close to groceries
- Lake nearby

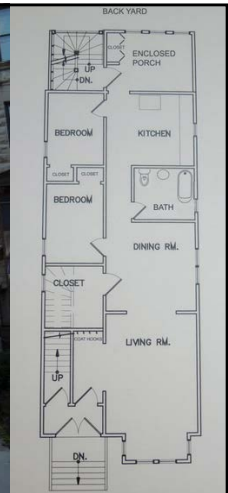


•Average rent:

- Studio: \$850+
- 1 bedroom: \$1050+
- 2 bedroom: \$1600+

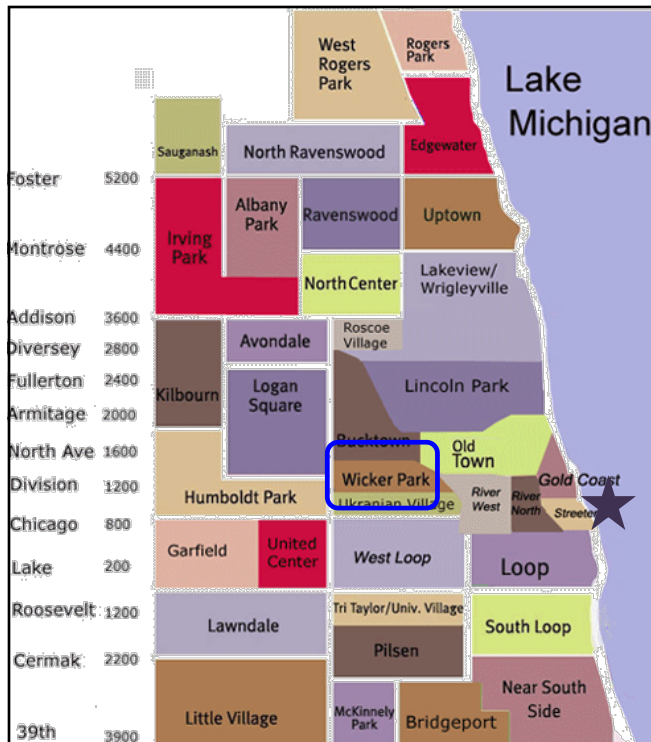
## Jessie & Stephanie's

- \$1650/month without utilities
- Halfway between the Red Line and Lakeshore Drive buses (25 min commute)



## Megan and Simona's Apartment

- Rent- \$1685
- Heat included
- Utilities: \$40 per month
- 2 bedroom
- 20-30 minute commute
- Near express busses downtown and the Belmont redline
- Close to the lake



## Wicker Park

Commute time : 20-40 min



## Wicker Park

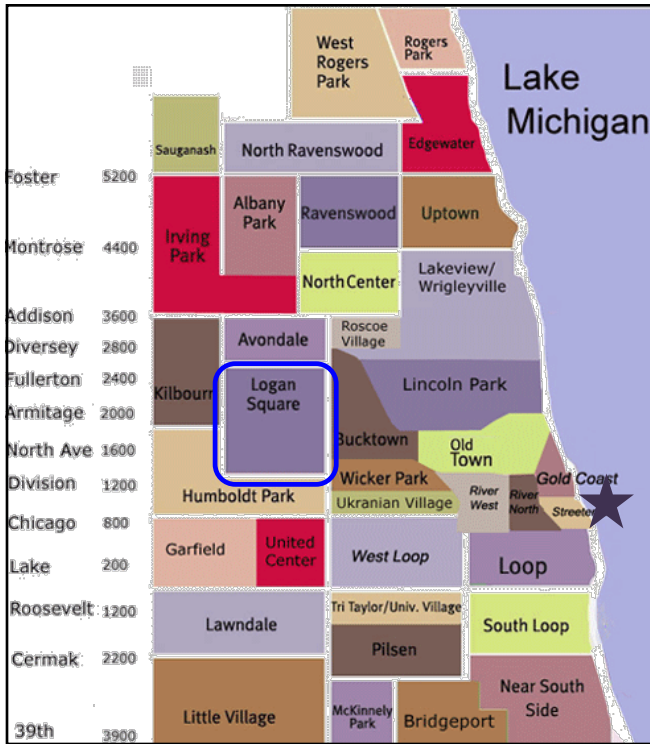
- Art students, young professionals, longtime residents
- Features:
  - Shopping, active nightlife
  - Smaller independent stores
  - Art galleries
  - Summer street festivals
  - Real World Season 11 Location
- Average rent:
  - Studio: \$800+
  - 1 bedroom: \$1000+
  - 2 bedroom: \$1400+



## Luba's Apartment

- 2 bedroom
- Rent-\$1200/month
- Utilities-\$100-200/month





## Logan Square

Commute time : 30-60 min



## Logan Square

- Art students, young professionals, longtime residents
- Features:
  - Good bar and food scene
  - Street Festivals
  - Pop-up art galleries
  - Trendy neighborhood vibe
- Average rent:
  - Studio: \$600+
  - 1 bedroom: \$750+
  - 2 bedroom: \$1000+

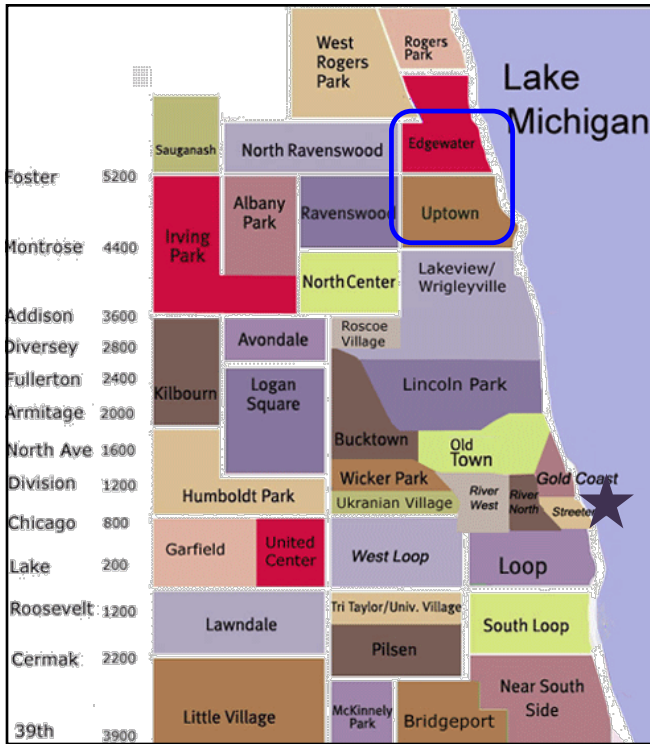




## Ravenswood/Lincoln Square

- Young professionals, families, less hectic
- Features:
  - Northcenter Town Square
  - Festivals, summer concerts, Farmer’s Market
  - Variety of different restaurants
  - Old Town School of Folk Music
- Average rent:
  - Studio: \$650+
  - 1 bedroom: \$900+
  - 2 bedroom: \$1250+





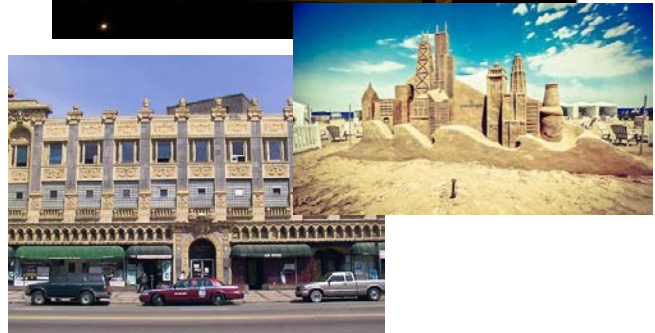
## Uptown/Edgewater

Commute time : 30-60 min



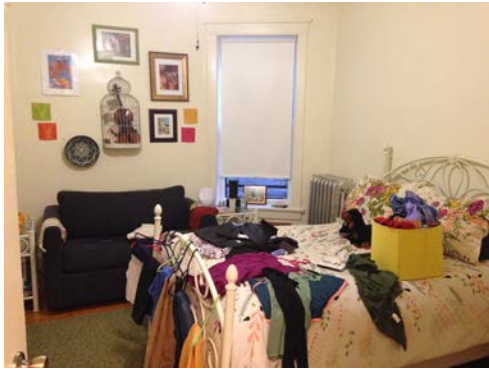
## Uptown/Edgewater

- Students, young professionals, longtime residents
- Features:
  - Many theaters and music venues
  - In between Evanston and Downtown
  - Proximity to Montrose Beach
  - Diverse neighborhood
- Average rent:
  - Studio: \$700+
  - 1 bedroom: \$900+
  - 2 bedroom: \$1250+



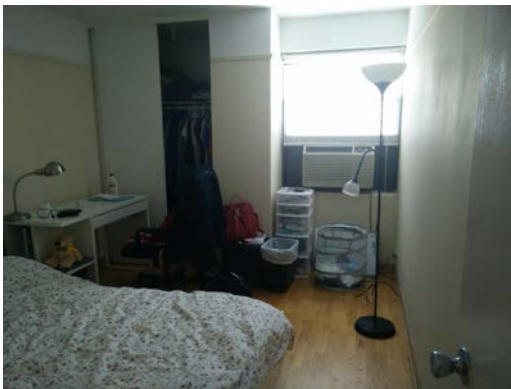
# Hannah's Apartment

- Uptown
- 3 bedroom
- Rent-\$2000/month
- Close to Express Bus and Redline
- 40 Minute Commute



# Shimeng's Apartment

- Uptown
- 3 bedroom
- Rent-\$1770/month
- Utilities: laundry room, gym, barbecue area



## Hyewon's Apartment

- Edgewater
- Rent: \$1400/month
- 2 bed/1 bath
- Near redline and express bus stop
- 25-35 minutes to campus



### Chicago



Studio to 2 Bedroom  
Worcester House  
Owned by NMH

### Grad Student Housing

#### Evanston



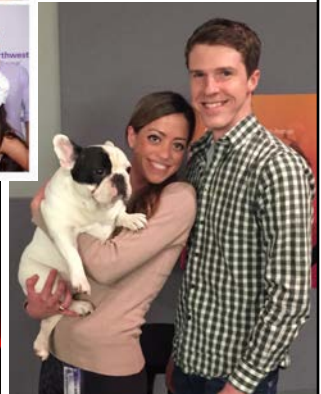
Studio to 3 Bedroom  
Engelhart Hall  
Seabury Apartments

For more info : <http://www.northwestern.edu/gradhousing/index.html>

## The stipend is livable!

\$2,643/month in 2017-18

Rent & Insurance - \$900 + \$20  
 Taxes ~ \$400  
 Cell Phone - \$60  
 Cable/Internet - \$75  
 Utilities - \$75  
 Gym - \$16  
 Food - \$350  
 Transportation - \$40 Student Activities Fee  
 Personal care, clothing, etc - \$150




---

**\$632 to PARTY**

## Additional Resources

- Online resources
  - Padmapper: [www.padmapper.com/](http://www.padmapper.com/)
  - Craigslist: <http://chicago.craigslist.org/>
  - Chicago Reader: <http://www.chireader.com/>
  - Rent.com: <http://www.rent.com>
  - Clearmap: <http://gis.chicagopolice.org/>
- Visit in person over the summer
  - Free services will drive you around
    - Chicago Apartment Finders: <http://www.chicagoapartmentfinders.com/>
    - Apartment People: <http://www.apartmentpeople.com/>
  - Time it to a summer festival!
    - Listings at Metromix Chicago or Time Out Chicago
- Contact current DGP students!



## Contact Us!

**Caitlin Pegg**  
([caitlinpegg2014@u.northwestern.edu](mailto:caitlinpegg2014@u.northwestern.edu))

**Laura Ruhge**  
([laurablasnitz2012@u.northwestern.edu](mailto:laurablasnitz2012@u.northwestern.edu))

**Patrick Woida**  
([patrickwoida2014@u.northwestern.edu](mailto:patrickwoida2014@u.northwestern.edu))