



Events all Year



**Metra**  
The way to really fly.

**In Chicago....**

**AMTRAK**

**Greyhound**



**...transportation is VERY easy!**

WELCOME TO  
**O'HARE**  
INTERNATIONAL  
AIRPORT



## Things to Keep in Mind

### 1. Transportation

– Walk, bike, 'L', bus, car?

### 2. Necessities

– Groceries, fitness, shopping, entertainment, etc.

### 3. Personality of neighborhood and property

### 4. Living arrangements

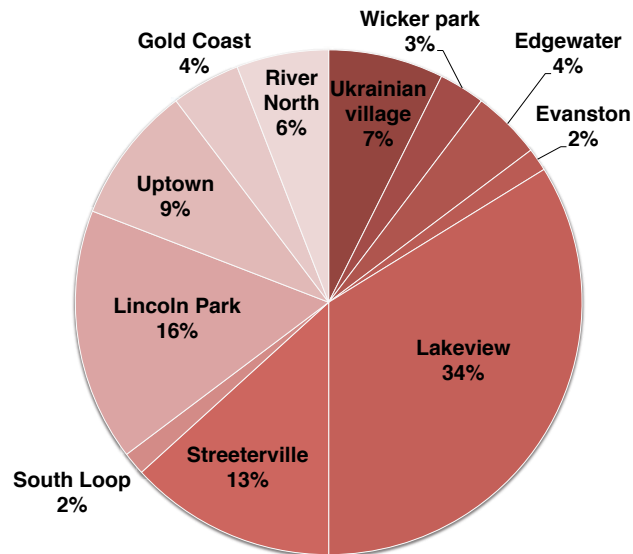
– Pets, roommates

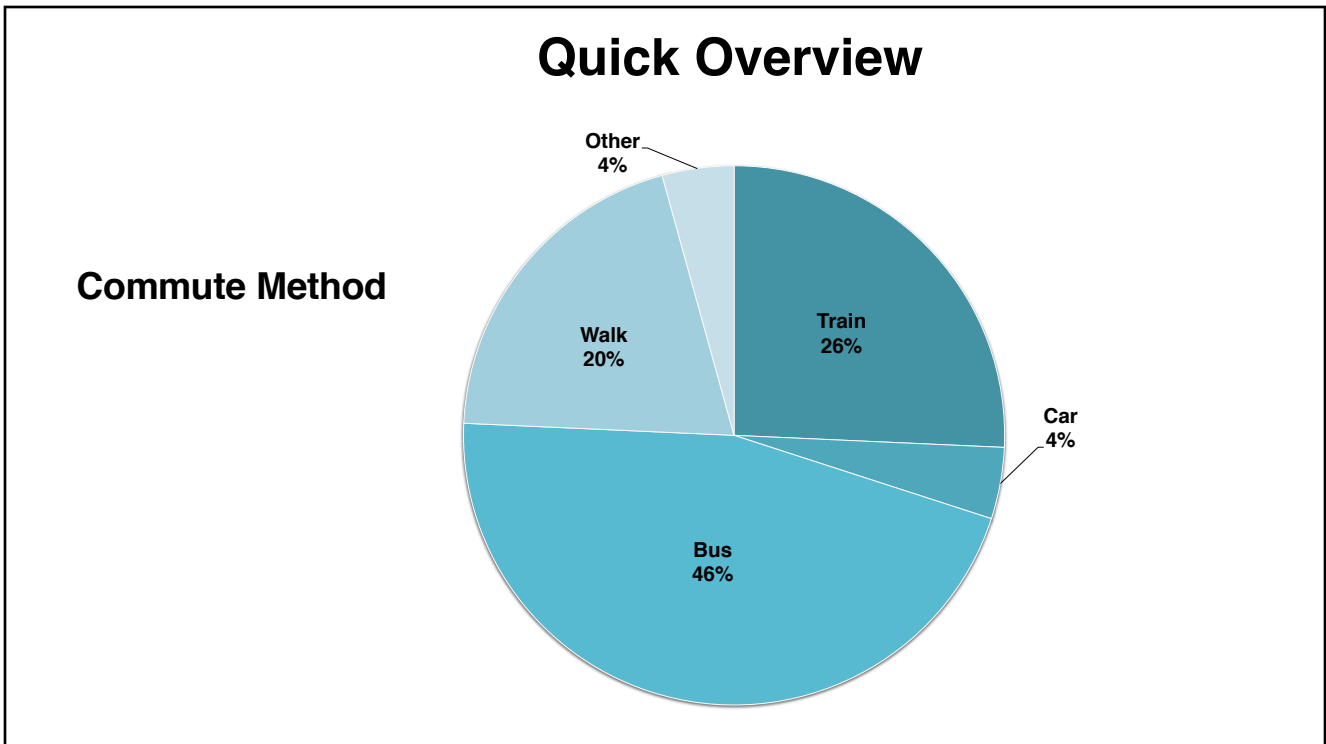
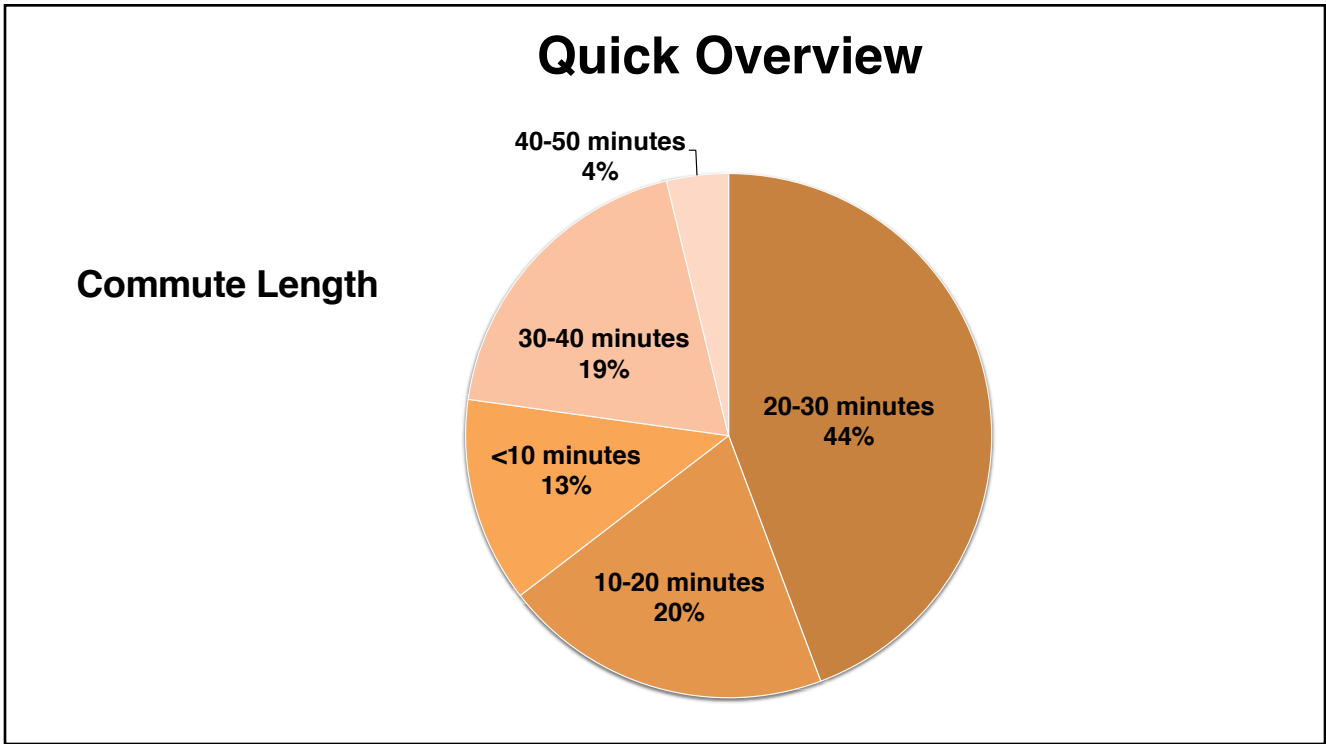
### 5. Buying vs. renting

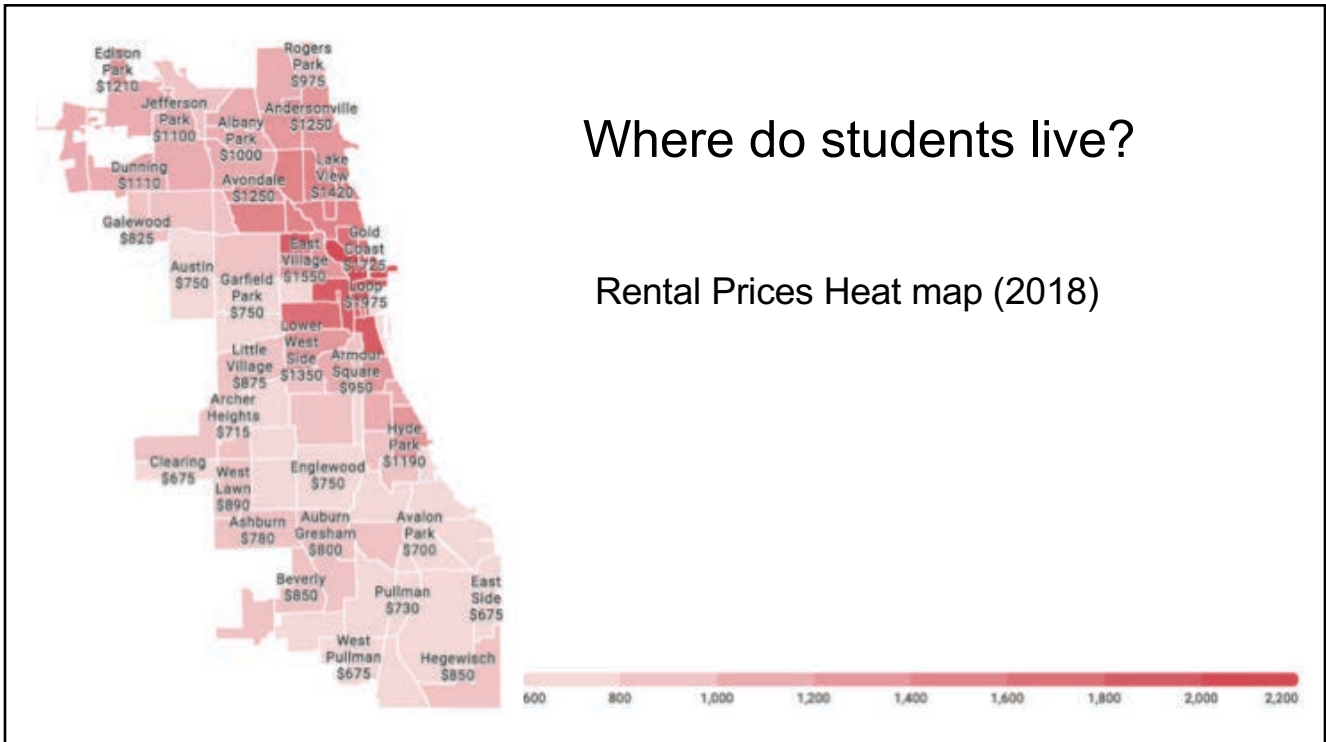
### 6. Utilities included

## Quick Overview

Neighborhood

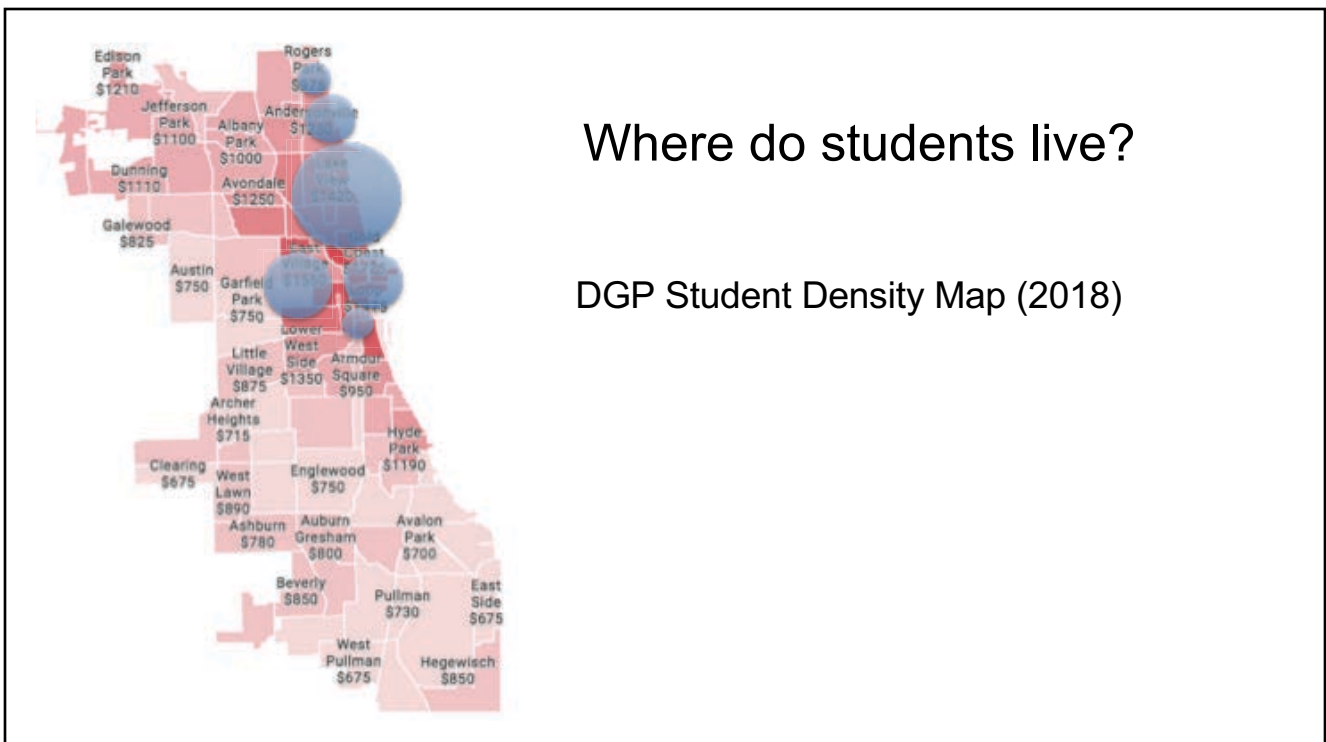






Where do students live?

Rental Prices Heat map (2018)



Where do students live?

DGP Student Density Map (2018)



## River North Streeterville Loop

Commute time, walking : ~5-20 min




## Streeterville & River North Area

- Walking distance
- Frequent naps
- Michigan Ave & Rush Street
- Water Tower - shopping
- Near Lake Front and
- beach running/bike path
- Near LA fitness

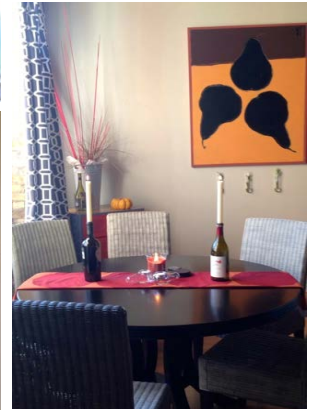
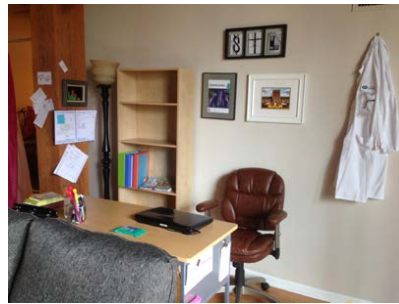
Average rent:

- Studio: \$1600
- 1 bedroom: \$1900
- 2 bedroom: \$3500



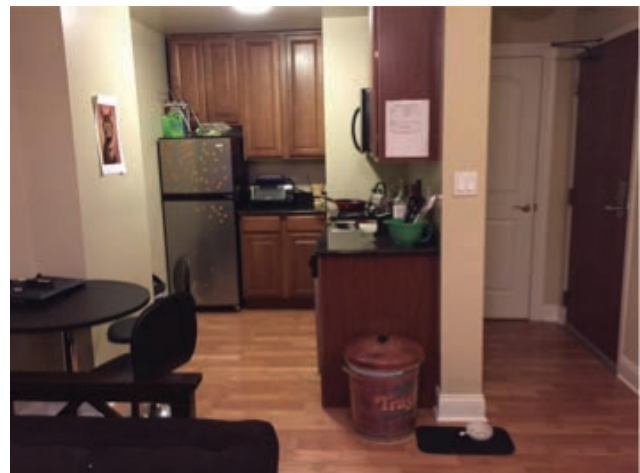
## Caitlin's Apartment

- One bedroom, one bathroom
- 5 minute walk from lab
- Rent: \$1850
- Doorman
- Rooftop, gym, laundry facilities



## Carrie's Studio Apartment

- Rent \$1295/month without electricity
- No additional Pet fees
- Five minute walk to school





## South Loop

Commute time, train/bus: 20-30 min

- Near Millennium & Grant Park
- Close to Chinatown
- Easy access to almost all L trains
- Near Museum Campus

Average rent:

- Studio: \$1300
- 1 bedroom: \$1700
- 2 bedroom: \$2250

## South Loop

**Lincoln Park**  
Commuter time, bus/train : 20-40 min

# Lincoln Park

College students, young professionals, families

Features:

- DePaul University & associated nightlife
- Children's Memorial
- Lincoln Park Zoo
- Large retail areas

Average rent:

- Studio: \$1125
- 1 bedroom: \$1600
- 2 bedroom: \$2200

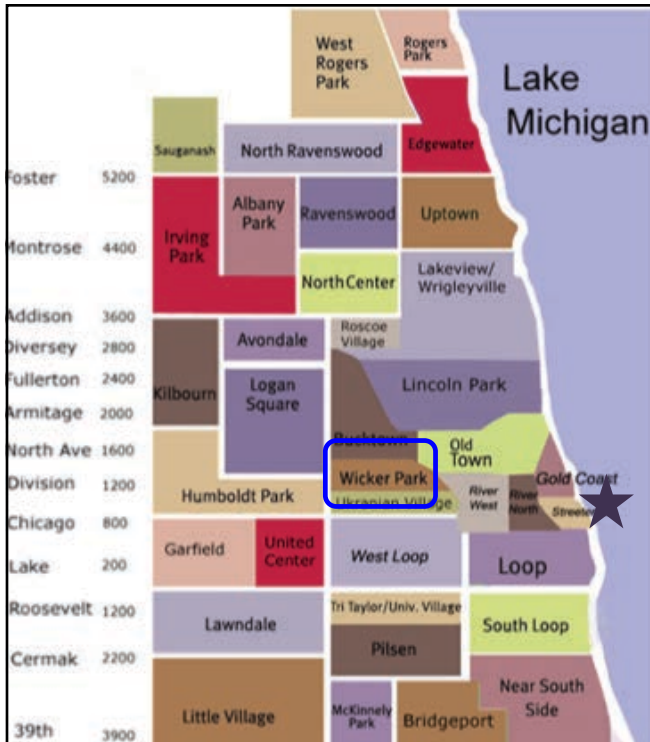


*The Second City*

**Lakeview**  
Commute time : 20-40 min

## Lakeview

- Young professionals, small families, longtime residents
- Features:
  - Wrigley Field and Boystown
  - Lots of restaurants & bars
  - Close to groceries
  - Lake nearby
- Average rent:
  - Studio: \$1100
  - 1 bedroom: \$1450
  - 2 bedroom: \$2150



## Wicker Park

Commute time : 20-40 min



## Wicker Park

- Art students, young professionals, longtime residents
- Features:
  - Shopping, active nightlife
  - Smaller independent stores
  - Art galleries
  - Summer street festivals
  - Real World Season 11 Location
- Average rent:
  - Studio: \$1200+
  - 1 bedroom: \$1800+
  - 2 bedroom: \$2100+

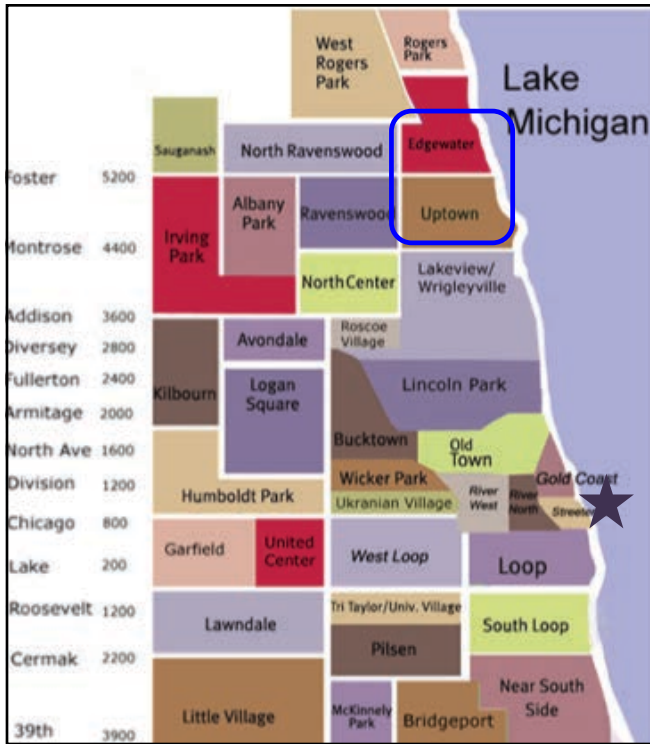


**Logan Square**  
Commute time : 30-60 min

## Logan Square

- Art students, young professionals, longtime residents
- Features:
  - Good bar and food scene
  - Street Festivals
  - Pop-up art galleries
  - Trendy neighborhood vibe
- Average rent:
  - Studio: \$950
  - 1 bedroom: \$1500
  - 2 bedroom: \$2600





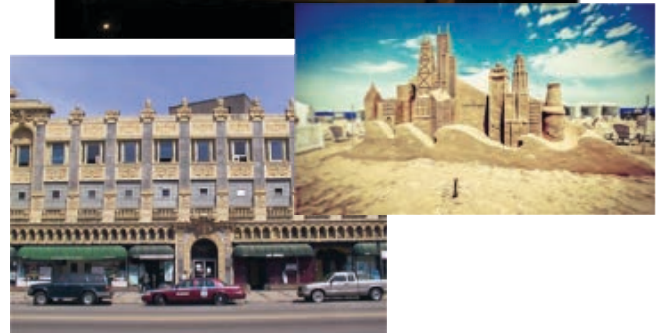
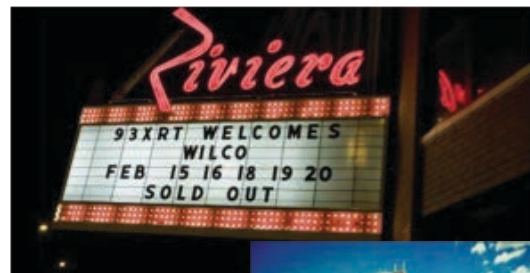
## Uptown/Edgewater

Commute time : 30-50 min



## Uptown/Edgewater

- Students, young professionals, longtime residents
- Features:
  - Many theaters and music venues
  - In between Evanston and Downtown
  - Proximity to Montrose Beach
  - Diverse neighborhood
- Average rent:
  - Studio: \$875
  - 1 bedroom: \$1090
  - 2 bedroom: \$1600



# Grad Student Housing

## Chicago



Studio to 2 Bedroom  
Worcester House  
Owned by NMH

## Evanston



Studio to 3 Bedroom  
Engelhart Hall  
Seabury Apartments

For more info : <http://www.northwestern.edu/gradhousing/index.html>

## The stipend is livable!

**\$31,716/year or \$2,643/month**

- Rent & Insurance - \$850 + \$15
- Taxes ~ \$400
- Cell Phone - \$60
- Cable/Internet - \$75
- Utilities - \$75
- Gym - \$16
- Food - \$350
- Transportation - \$40 Student Activities Fee
- Personal care, clothing, etc - \$150

---

**\$612 to PARTY**



## Additional Resources

- Online resources
  - Padmapper: [www.padmapper.com/](http://www.padmapper.com/)
  - Craigslist: <http://chicago.craigslist.org/>
  - Chicago Reader: <http://www.chireader.com/>
  - Rent.com: <http://www.rent.com>
  - Clearmap: <http://gis.chicagopolice.org/>
- Visit in person over the summer
  - Free services will drive you around
    - Chicago Apartment Finders: <http://www.chicagoapartmentfinders.com/>
    - Apartment People: <http://www.apartmentpeople.com/>
  - Time it to a summer festival!
    - Listings at Metromix Chicago or Time Out Chicago
- Contact current DGP students!



## Contact Us!

**Caitlin Pegg**  
[caitlinpegg2014@u.northwestern.edu](mailto:caitlinpegg2014@u.northwestern.edu)

**Meg Nas**  
[megannas2014@u.northwestern.edu](mailto:megannas2014@u.northwestern.edu)

**Patrick Woida**  
[patrickwoida2014@u.northwestern.edu](mailto:patrickwoida2014@u.northwestern.edu)